



GLACIER POINT

MARKETING PLANS
BETHNAL GREEN | E2



GLACIERPOINT-E2.CO.UK

 **BRIDGE.CO.UK**
NEW HOMES & LAND

"Positioned brilliantly
for the perfect
life/work balance"





GLACIER POINT

MARGERIE COURT

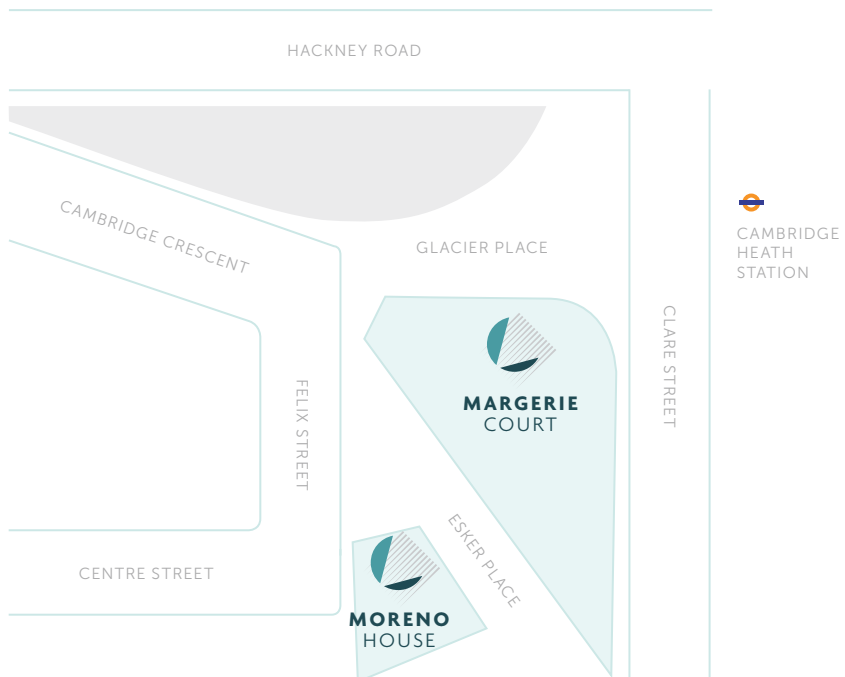
3 PENTHOUSES
55 APARTMENTS

A collection of high specification homes in a striking landmark building

MORENO HOUSE

4 DUPLEXES
2 APARTMENTS

A beautiful conversion of a former Victorian public house



1 MORENO HOUSE

2 BEDROOMS
1 EN SUITE
1 BATHROOM

TOTAL AREA
72.0 sqm (775.0 sqft)

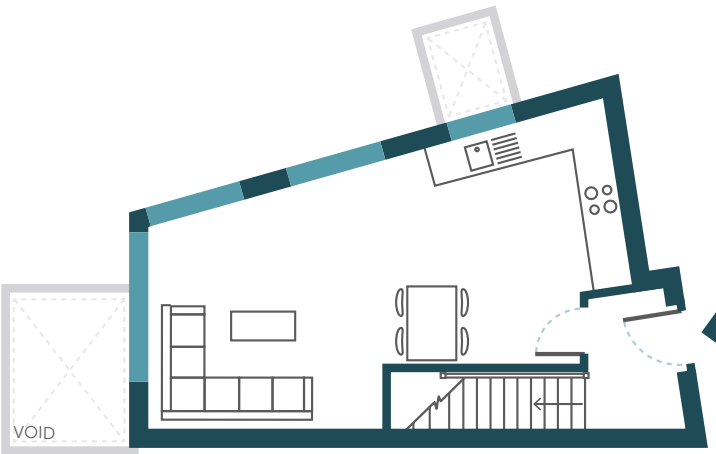
BEDROOM 2
4.0 x 2.5 m (10.0 sqm)

LOWER GROUND &
GROUND FLOOR DUPLEX

KITCHEN/LIVING/DINING
8.0 x 4.4 m (29.0 sqm)

TERRACE
4.5 sqm

BEDROOM 1
3.6 x 3.7 m (12.5 sqm)



202 MARGERIE COURT

1 BEDROOM
1 BATHROOM

TOTAL AREA
50.0 sqm (538.0 sqft)

BEDROOM 1
4.0 x 3.0 m (12.0 sqm)

SECOND FLOOR

KITCHEN/LIVING/DINING
4.2 x 5.3 m (24.6 sqm)

WINTER GARDEN
4.5 sqm



203 MARGERIE COURT

2 BEDROOMS
1 EN-SUITE
1 BATHROOM

SECOND FLOOR

TOTAL AREA
66.0 sqm (710.0 sqft)

KITCHEN/LIVING/DINING
5.1 x 4.1 m (22.8 sqm)

BEDROOM 1
4.9 x 3.5 m (12.5 sqm)

BEDROOM 2
3.0 x 3.6 m (9.4 sqm)

BALCONY
5.5 sqm



207 MARGERIE COURT

1 BEDROOM
1 BATHROOM

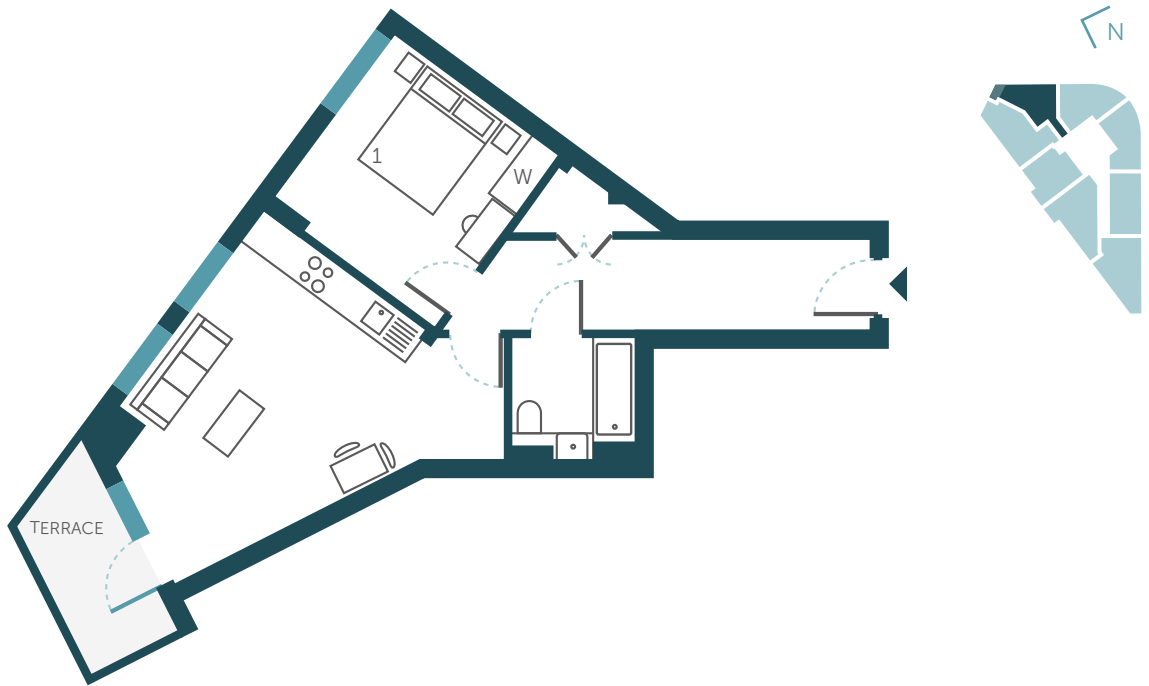
TOTAL AREA
50.0 sqm (538.0 sqft)

BEDROOM 1
3.4 x 3.5 m (12.0 sqm)

SECOND FLOOR

KITCHEN/LIVING/DINING
4.9 x 4.0 m (22.0 sqm)

BALCONY
5.3 sqm



302 MARGERIE COURT

1 BEDROOM
1 BATHROOM

TOTAL AREA
50.0 sqm (538.0 sqft)

BEDROOM 1
4.0 x 3.0 m (12.0 sqm)

THIRD FLOOR

KITCHEN/LIVING/DINING
4.2 x 5.3 m (24.6 sqm)

WINTER GARDEN
4.5 sqm



303 MARGERIE COURT

2 BEDROOMS
1 EN SUITE
1 BATHROOM

THIRD FLOOR

TOTAL AREA
66.0 sqm (710.0 sqft)

KITCHEN/LIVING/DINING
5.1 x 4.1 m (22.8 sqm)

BEDROOM 1
4.9 x 3.5 m (12.5 sqm)

BEDROOM 2
3.0 x 3.6 m (9.4 sqm)

BALCONY
5.5 sqm



401 MARGERIE COURT

1 BEDROOM
1 BATHROOM

TOTAL AREA
50.0 sqm (538.0 sqft)

BEDROOM 1
3.5 x 3.7 m (12.2 sqm)

FOURTH FLOOR

KITCHEN/LIVING/DINING
3.6 x 3.5 m (22.5 sqm)

WINTER GARDEN
6.4 sqm



601 MARGERIE COURT

1 BEDROOM
1 BATHROOM

TOTAL AREA
50.0 sqm (538.0 sqft)

BEDROOM 1
3.5 x 3.7 m (12.2 sqm)

SIXTH FLOOR

KITCHEN/LIVING/DINING
3.6 x 3.5 m (22.5 sqm)

WINTER GARDEN
6.4 sqm



602 MARGERIE COURT

1 BEDROOM
1 BATHROOM

TOTAL AREA
50.0 sqm (538.0 sqft)

BEDROOM 1
4.0 x 3.0 m (12.0 sqm)

SIXTH FLOOR

KITCHEN/LIVING/DINING
4.2 x 5.3 m (24.6 sqm)

WINTER GARDEN
4.5 sqm



701 MARGERIE COURT

2 BEDROOMS
1 EN SUITE
1 BATHROOM

TOTAL AREA
72.0 sqm (775.0 sqft)

BEDROOM 2
2.6 x 2.7 m (7.0 sqm)

SEVENTH FLOOR

KITCHEN/LIVING/DINING
6.1 x 5.3 m (29.8 sqm)

WINTER GARDEN
4.4 sqm

BEDROOM 1
4.9 x 3.9 m (15.9 sqm)





GLACIERPOINT-E2.CO.UK



BRIDGE.CO.UK
NEW HOMES & LAND